

How We **PROTECT** **NATURAL RESOURCES**

Implementing the goals, objectives, and recommendations of
Landscapes3—The Chester County Comprehensive Plan



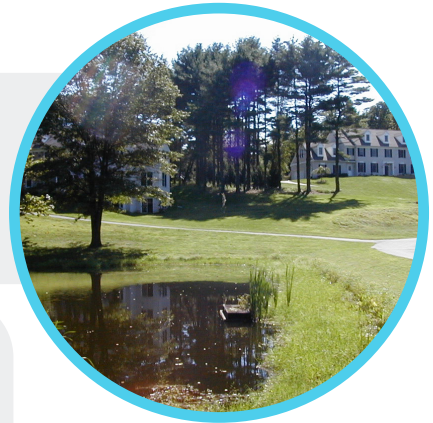
Guidance for Municipalities

Goal Protect and restore critical natural resources to ensure a resilient environment that supports healthy communities.

Objectives

A

Guide development away from sensitive natural resources and toward areas appropriate for accommodating growth.



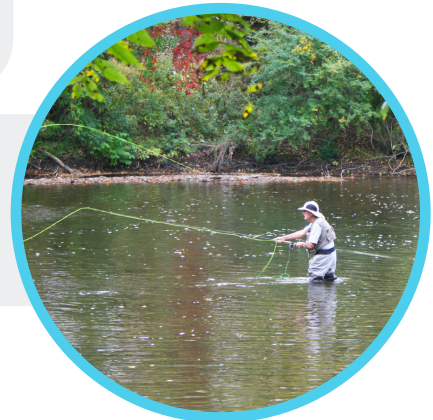
B

Support comprehensive protection and restoration of the county's ecosystems including woodlands, wetlands, surface waters, riparian corridors, groundwater, floodplains, soil health, steep slopes, aquatic and wildlife habitats, and natural heritage areas.



C

Support municipal and regional natural resource protection efforts, and promote a resource-based planning approach.



D

Promote the environmental, aesthetic, and economic value of protecting and restoring natural resources to residents and municipalities.



E

Promote groundwater recharge, stormwater runoff and pollution reduction, flood mitigation and resiliency, and water quality improvement and protection to **support safe and healthy communities.**



F

Ensure a safe, clean, long-term supply of water to meet the current and future needs of residents and businesses.



Recommendations

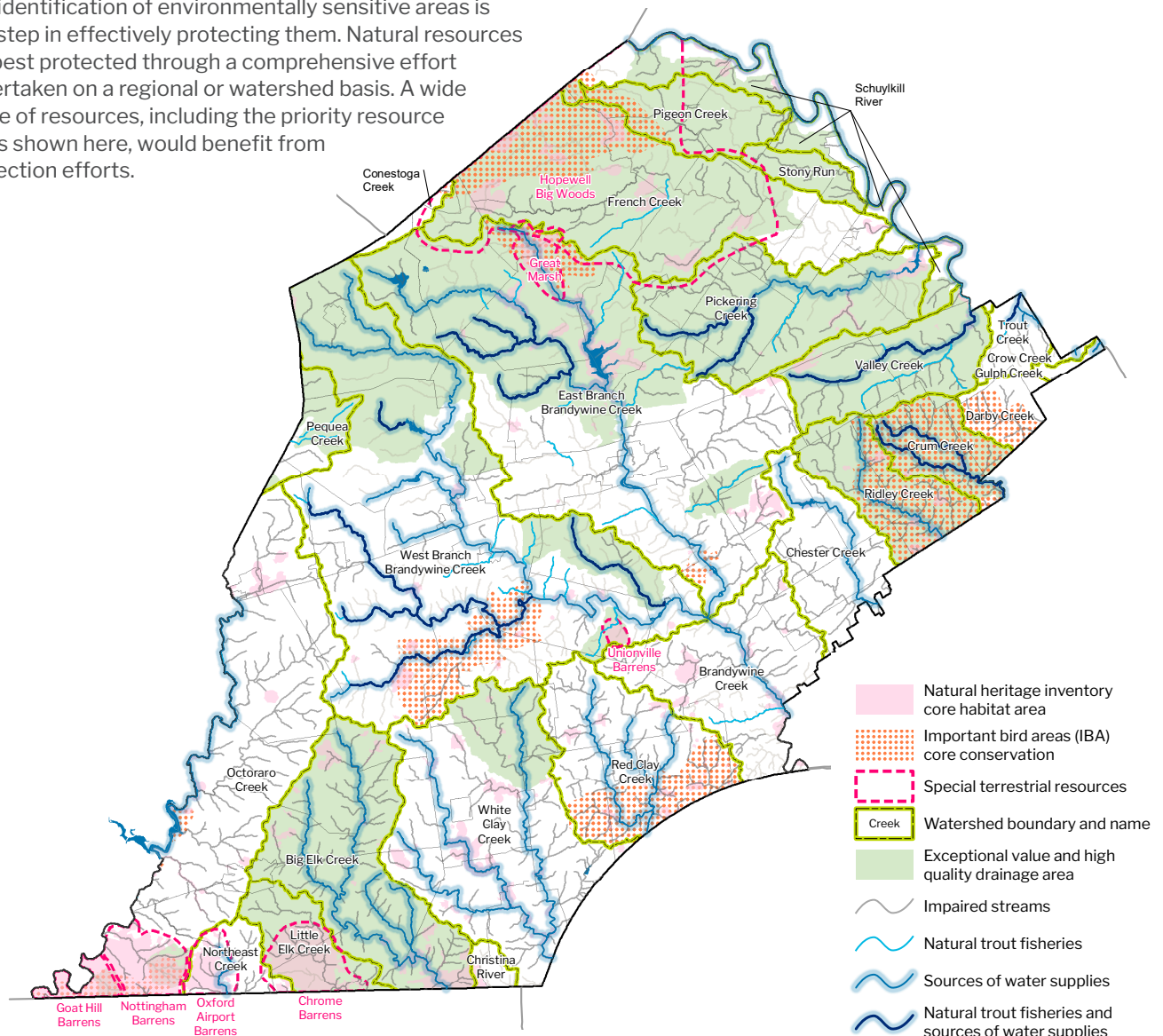
- 1 Promote benefits of natural resource protection
- 2 Provide natural resource policy and ordinance assistance
- 3 Enhance countywide water resources planning
- 4 Monitor impacts of change on water resources
- 5 Enhance stormwater technical assistance and collaboration
- 6 Promote innovative practices for improved water quality
- 7 Enhance flood resiliency
- 8 Support municipal on-lot sewage management programs

Recommendation details are in *Landscapes3*. ▶

chesccplanning.org (see COMPREHENSIVE PLAN)

Natural Resource Priority Protection Areas

The identification of environmentally sensitive areas is one step in effectively protecting them. Natural resources are best protected through a comprehensive effort undertaken on a regional or watershed basis. A wide range of resources, including the priority resource areas shown here, would benefit from protection efforts.



Implementation Tools



Model Ordinances

The *Brandywine Creek Greenway Strategic Action Plan* contains model natural resources protection ordinances that are applicable to all Chester County municipalities- not just those within the Brandywine Creek Watershed.

▶ brandywine.org (see CONSERVANCY)



Planning eTools

The Chester County Planning Commission developed and maintains topical eTools that provide background information, municipal examples, and resources related to planning topics. ▶ chescoPlanning.org (see MUNICIPAL CORNER)

Natural resources protection eTools include:

- Natural Resources Protection Standards ▶
- Floodplain Management and Protection ▶
- Greenways ▶
- Riparian Buffers ▶
- Steep Slope Protection ▶
- Wetland Protection ▶
- Woodland Conservation ▶



WeConservePA

This organization, formerly the Pennsylvania Land Trust Association, maintains natural resource and conservation guides, model standards, and other useful resource protection information. ▶ WeconservePA.org



Partners

Many organizations in Chester County and within the region offer resources to municipalities, whether through information, technical assistance, or financial assistance to aid in the protection of natural resources.

▶ WeconservePA.org/Groups



Return on Environment

Chester County's *Return on Environment* report (2019) quantifies the economic benefit of protected open space, including the value provided by natural resources located on the open space, such as through flood protection and air quality improvement. This report conveys the benefits of a comprehensive natural resources protection policy, and the overall value of protecting open space.

▶ chescoPlanning.org/OpenSpace

Implementation details are in *Landscapes3*. ▶

chescoPlanning.org (see COMPREHENSIVE PLAN)



Explore all the goals. ▶

chescoPlanning.org (see COMPREHENSIVE PLAN)

How We PRESERVE

How We PROTECT

How We APPRECIATE

How We LIVE

How We PROSPER

How We CONNECT

Questions? Contact our knowledgeable staff.

Chester County Planning Commission

601 Westtown Road, Suite 270

P.O. Box 2747

West Chester, PA 19380

610-344-6285

chescoPlanning.org

